



# Front-end Investment or Back-end Financial Drain?



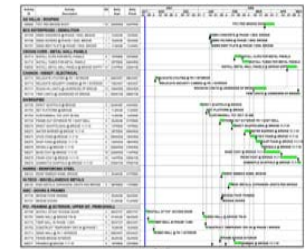
Ritter Institute hosts seminars in a setting far removed from the demands of the construction site.

Your management and scheduling staff will enjoy the beauty and amenities of Semiahmoo's luxury resort.

Book now for discounted room rates.



## *Ritter Institute*



# The most Comprehensive CPM Training Available

**Make the commitment** at the beginning of each project to provide the time and personnel to develop a comprehensive schedule. This will yield the following benefits:

- Managers will have to think through the entire project.
- Areas of schedule risk can be identified prior to the start of the project.
- Manpower, equipment and materials can be optimized.
- Methods and sequences of construction can be tested (what-if scenarios).
- Establish a basis of contracting subs.
- Project understanding obtained during scheduling facilitates “work-arounds” when delays occur.



## Time is a non-renewable resource.

Properly prepared and applied Critical Path Method (CPM) schedules are a rarity in construction, and remain the single most underutilized tool in delivering a successful project.



In his 25 years of experience, Ted Ritter has seen the best and worst of construction projects, as scheduler in successful ones and expert witness in unsuccessful ones. Through this experience, Ritter has systematically developed a proven method for creating CPM schedules and using them to deliver successful projects.

Through Ritter’s four day seminar, both Management and Schedulers will learn how to work together to use CPM to it’s full potential.

## Scheduling Management and Application

**Attending: Management and Schedulers  
(Day 1)**

**The purpose of having Management involved is to protect your investment in your Schedulers.**

- What CPM Schedules are and how they work.
- How to effectively apply a Scheduler to your projects.
- How to leverage your scheduling investment.
- CPM Contract language and specifications.
- CPM language in Subcontracts.
- Delay assessment and presentation – Contemporaneous Period Analysis (CPA)

## CPM Scheduling

**Attending: Schedulers  
(Management Optional)  
(Days 2-4)**

- Philosophy and history of CPM scheduling.
- Developing a basic CPM network with correct logic and a sufficient level of detail.
- Resource loading the CPM schedule
  - Benefits of resource loading
  - Resistance to resource loading
  - Cost
  - Manpower
- Updating a CPM network.
- Reporting and analysis.
- Dealing with impacts that consume time, including CPA.
- CPM scheduling software – what good is the computer, and why we need to use one at all.

**Maintain the commitment** to good scheduling throughout the life of the project. This will pay these dividends:

- Know the status of the project at any time.
- Strategize and communicate recovery programs
- Increased project morale- project timeline and status is known to everyone.
- Cost-loaded schedules support accurate and efficiently pay requests and updates.
- Timely demonstration of impacts.
- Support or refute delay claims.